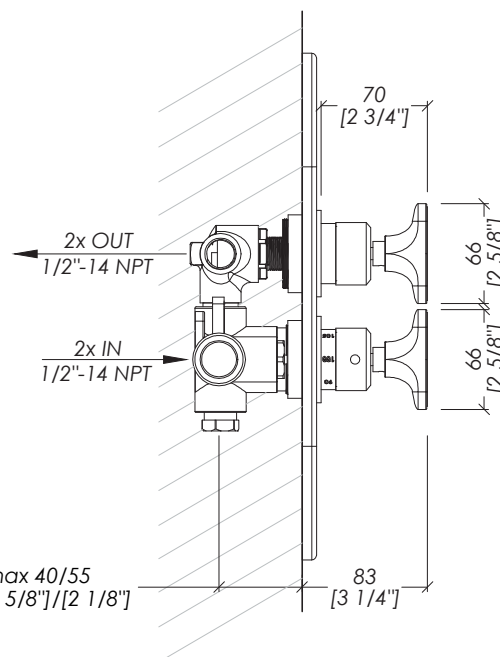
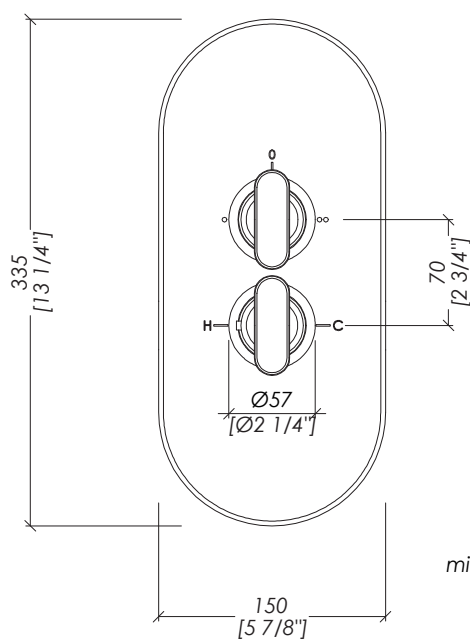
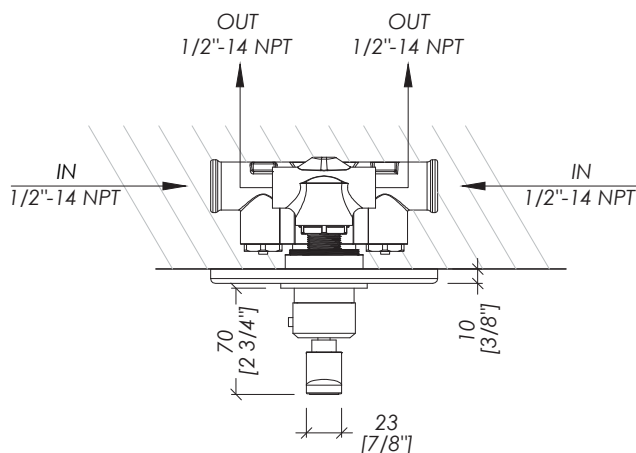


Devon&Devon

TWENTIES - US STANDARD

OPZIONE A

OPTION A



> MISCELATORE TERMOSTATICO ESCLUSI INCASSI
DA ABBINARE CON:
- **WA2INC_US**

> SU RICHIESTA DISPONIBILI PROLUNGHE EXC-148P3 (30mm)

> THERMOSTATIC MIXER EXCLUDING BUILT-IN MODELS
TO BE COMBINED WITH:
- **WA2INC_US**

> UPON REQUEST EXTENSION KIT EXC-148P3 (inch 1 1/8")

updating 01|2022

TWY949ACR2WEST_US; TWY949ANK2WEST_US; TWY949AOTS2WEST_US; TWY949A/14K2WEST_US; TWY949AGK2WEST_US; TWY949AMB2WEST_US;
TWY949ACRMCA2WE_US; TWY949ANKMCA2WE_US; TWY949AOTSMCA2WE_US; TWY949A/14KMCA2WE_US; TWY949AGKMCA2WE_US; TWY949AMBMCA2WE_US;
TWY949ACRCLO2WE_US; TWY949ANKCLO2WE_US; TWY949AOTSCLO2WE_US; TWY949A/14KCLO2WE_US; TWY949AGKCLO2WE_US; TWY949AMBCLO2WE_US

> MISCELATORE TERMOSTATICO (ESCLUSI INCASSI) AD 2 USCITE CON LEVE IN:
OTTONE O OTTONE E MARMO

> MATERIALE > ottone

FINITURA: cromo | nickel lucido | ottone antico | oro 14K | oro 24K | nero opaco

> MATERIALE > marmo

FINITURA: Bianco Carrara | Calacatta Oro

> TOLLERANZA: $\pm 2\%$

> DIMENSIONE IMBALLO: mm -- H

> PESO: -- Kg

> THERMOSTATIC MIXER (EXCLUDING BUILT-IN MODELS) WITH 2 OUTLET
WITH HANDLES IN: BRASS OR BRASS AND MARBLE

> MATERIAL > brass

FINISH: chrome | polished nickel | antique brass | 14K gold | 24K gold | black matt

> MATERIAL > marble

FINISH: White Carrara | Calacatta Oro

> TOLERANCE: $\pm 2\%$

> PACKAGING SIZE: inch -- H

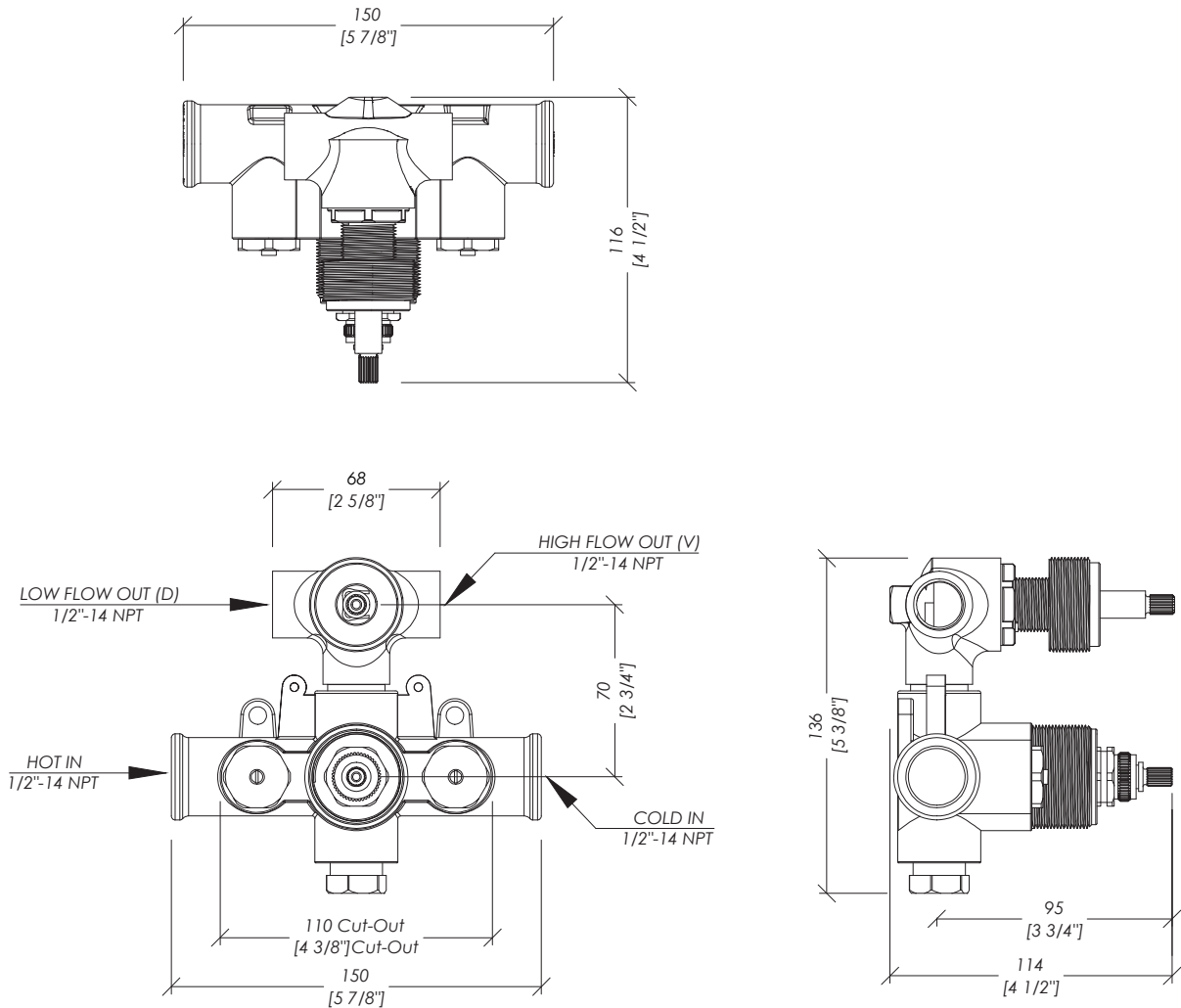
> WEIGHT: -- Lbs

N.B. Tutte le misure sono in millimetri/pollici. Questo disegno è di proprietà Devon&Devon.
Non può essere riprodotto o trasmesso a terzi senza autorizzazione.

N.B. All measurements are in millimetres/inch. This drawing is property of Devon&Devon.
It may not be reproduced or transmitted to third parties without authorization.

Devon&Devon

TWENTIES - US STANDARD



updating 01|2022

WA2INC_US

- CORPO DA INCASSO - MISCELATORE TERMOSTATICO AD 2 USCITE
- MATERIALE ➤ ottone
- TOLLERANZA: ± 2 %
- DIMENSIONE IMBALLO: mm -- H
- PESO: -- Kg

N.B. Tutte le misure sono in millimetri/pollici. Questo disegno è di proprietà Devon&Devon. Non può essere riprodotto o trasmesso a terzi senza autorizzazione.

- ROUGH-IN BOX - THERMOSTATIC MIXER WITH 2 OUTLET
- MATERIAL ➤ brass
- TOLERANCE: ± 2 %
- PACKAGING SIZE: inch -- H
- WEIGHT: -- Lbs

N.B. All measurements are in millimetres/inch. This drawing is property of Devon&Devon. It may not be reproduced or transmitted to third parties without authorization.