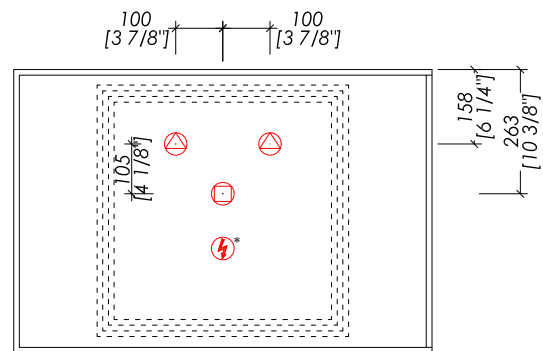
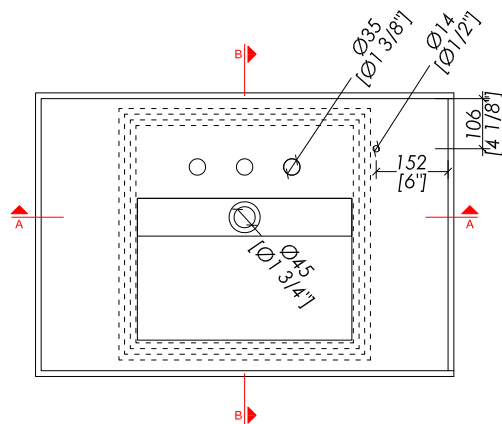
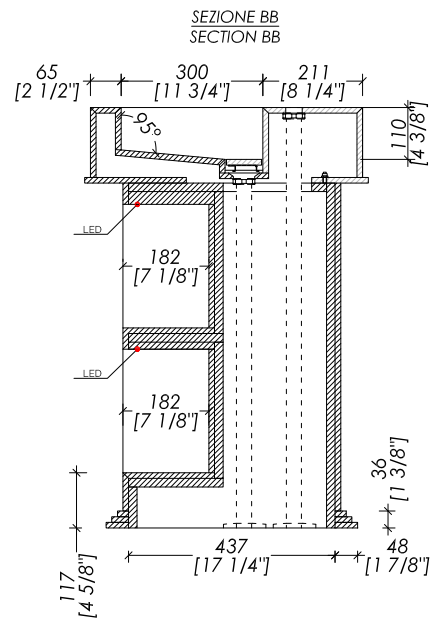
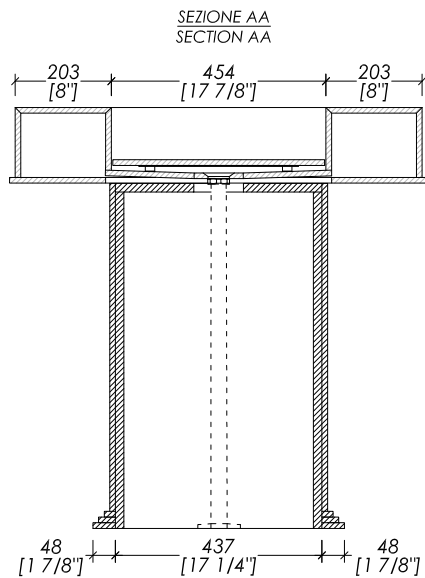


Devon&Devon

MY LOVE WATER VANITY SMALL

design Pierre-Yves Rochon



* Alimentazione elettrica DC 12V
12V power supply



updating 02|2024

- > MOBILE PORTALAVABO > gres porcellanato
- FINITURA: river jade | taj mahal | port laurent
- > SPECCHIO | ASTA PORTA ASCIUGAMANO > ottone
- > FINITURA: cromo | oro chiaro | nickel lucido
- > LED : MAX 10 WATT
- > DIMENSIONE IMBALLO: mm H
- > PESO TOTALE: Kg

N.B. Tutte le misure sono in millimetri/pollici. Questo disegno è di proprietà Devon&Devon. Non può essere riprodotto o trasmesso a terzi senza autorizzazione.

- > VANITY UNIT > porcelain stoneware
- FINISH: river jade | taj mahal | port laurent
- > MIRROR | TOWEL RAIL > brass
- > FINISH : chrome | light gold | polished nickel
- > LED : MAX 10 WATT
- > PACKAGING SIZE: inch H
- > WEIGHT: Lbs

N.B. All measurements are in millimetres/inch. This drawing is property of Devon&Devon. It may not be reproduced or transmitted to third parties without authorization.

